

CNC Plotter Printed Circuit Board

by Noor Yulita Dwi S

Submission date: 13-May-2024 09:18AM (UTC+0700)

Submission ID: 2377787879

File name: 8._Noor_Yulita_Dwi_Setyaningsih_116-112.pdf (480.06K)

Word count: 3006

Character count: 14423



Open Access

CNC Plotter Printed Circuit Board

Noor Yulita Dwi Setyaningsih^{1*}, Moh Rizal², Budi Cahyo Wibowo³¹ Electrical Engineering, Muria Kudus University, Indonesia² Electrical Engineering, Muria Kudus University, Indonesia³ Electrical Engineering, Muria Kudus University, Indonesia* Corresponding author: noor.yulita@umk.ac.id

ARTICLE INFO

Received: 15 Apr 2024

Accepted: 30 Apr 2024

ABSTRACT

Printed Circuit Board is a component or material that has a circuit path where electronic components will be installed or placed. In general, conventional PCB manufacturing requires several processes, such as printing on photo paper first, then screen printing the image and then removing the paper stuck to the PCB. In this research, the PCB engraving process will be operated using G-Code and GRBL controllers to control the machine. FlatCAM software is also used to prepare CNC work to create PCBs on CNC routers. The use of 3 stepper motors will provide a good carving composition in terms of movement of the x, y and Z axes, as well as the use of a spindle to control the drill bit which functions to carve the PCB layout. From the results, it was found that the process of making PCB paths has the precision of the engraving results from the predetermined design.

Keywords : CNC, PCB Plotter, G-Code, FlatCAM

1. Introduction

PCB (printed circuit board) is a place to store a series of electrical components without cables. In its development, this board has really helped revolutionize the shape of electronic devices in terms of design and size. The PCB board fabrication process continues to improve, apart from developing existing methods, new methods are also being sought to improve product quality, processing time and production costs [1] [2] [3]. In general, conventional PCB manufacturing requires several processes, such as printing on photo paper first, then screen printing the image and then removing the paper stuck to the PCB. [4]. CNC machines have computers that can convert G-Code characters into language that can be recognized by the machine and then processed [5] [6] [7]. CNC has many benefits for application, one of which is as a PCB board engraver to produce circuit paths or layouts, the use of CNC will produce layouts that are neater, safer and faster to work on compared to manual processes. In the manual process, the first step is to use an image schematic created for a particular application and transferred to the PCB, then the ironing process and use of chemicals. Obviously, this process requires quite a long time and great care to avoid errors. Meanwhile, the PCB plotter method is a method used to create layouts automatically based on the programming layout that has been designed. Previous research has applied making PCB layouts with CNC using an Atmega 128 but has the disadvantage of not using GRBL software so that the layout used cannot be seen, and controlling the x, y and z axes still uses a keypad. So, in this research improvements were made by making CNC using Arduino with the use of G-Code and GRBL software so that the operating process would be easier and more optimal.

2. Materials and Methods

a. CNC Shield

CNC (Computer Numerical Control) is a machine that is categorized as a machine tool, controlled by a personal computer using numerical language (command information with value symbols, graphs and icons) in accordance with approved standards [8]. The CNC Shield is designed to protect the Arduino from overheating of the motor driver and add hours of trouble-free operation to the plotter. The Arduino program is used to control each stepper motor using the A4988 driver module. The purpose of this Shield is to control the three axes (X, Y and Z axes) of the plotter machine, meaning control of the stepper motor [9] [10].

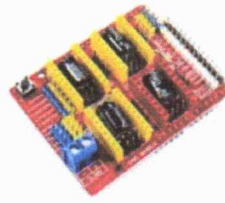


Figure 1. CNC Shield [9]

b. Nema 17 Stepper Motor

Stepper motors are electromechanical devices that work by converting electronic pulses into discrete mechanical movements. Stepper motors move based on a sequence of pulses given to the motor. Therefore, to drive a stepper motor, a stepper motor controller is needed which generates periodic pulses [11].

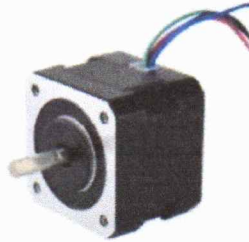


Figure 2. Nema 17 Stepper Motor [11].

c. GRBL Software Candle

GRBL software is designed to send G-Code (Geometric Code) to CNC machines, such as 3D milling machines. GRBL is Arduino-based CNC control software for controlling CNC movements which can be uploaded to the Arduino library. Basically GRBL is a hex file that can be uploaded to Arduino so that Arduino can read commands in G-code/Nc [12]. G-Code is a programming language that humans use to tell machines how to do things. For 3D printers, G-Code contains commands to regulate the movement of stepper motors in the X, Y and Z axes in the 3D printer. G-code consists of G- and M-commands that have movements or actions to be performed [13]. GRBL is designed to optimize continuous reading of G-Code commands using Arduino with operational accuracy. G-Code is a movement execution command code from a CNC machine. Currently GRBL can only be used for 3 axis machines, namely X, Y, and Z [14].

d. FlatCAM

Flatcam is software that can change various designs and produce CNC routers. In flatcam PCB design, Gerber files are used to produce Gcode, which Gcode will drive the CNC machine [3] [15] [16].

e. Hardware Design

This stage is the design of the components used. Schematic of the electronic circuit on the machine consisting of Arduino, CNC shield, stepper driver, Nema 17 motor, spindle motor, DC relay, limit switch.

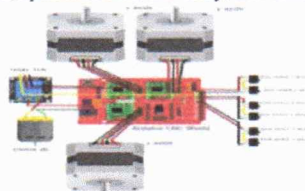
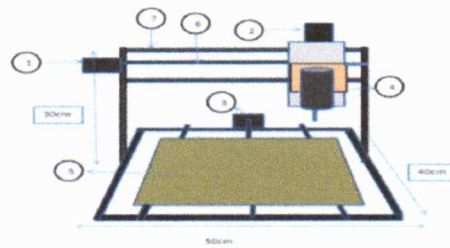


Figure 3. Hardware Design

f. Mechanical Design

This part of the machine uses angle iron and 2020 aluminum profiles as the main materials. This material is very suitable for use on CNC machines, because the material is light and strong, so it really supports the accuracy of machine work. This CNC machine measures 50cm long, 40cm wide and 30cm high.



Information:

1. Nema motor x x axis
2. Z axis nema z motor
3. Motor nema y y axis
4. DC Spindle Motor
5. Job Board
6. Ball Screw
7. Iron vslot

Figure 4. CNC Mechanical Design

g. **Software Design**

The following is a *flowchart* of the first process when the system is turned on, namely making a serial connection. After the serial connection is successful, it will run to read the machine position, after that set the machine position so that it reaches the desired zero point, after that open the *GCode file* and send the *GCode file* to the microcontroller. When the sending process is complete and the user still wants to print another PCB design, the user can repeat all the previous processes. If you no longer want to print, the user can end the *software* by closing the *software*.

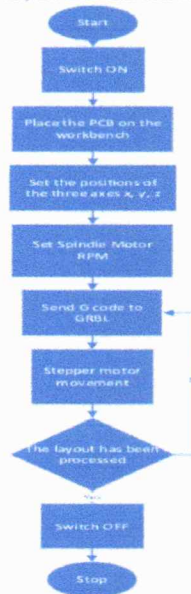


Figure 5. Software Design

3. Results

Some test results from this tool are as follows.

- a. Testing the error value for the accuracy of the x-axis movement

This test aims to determine the x-axis error value, whether the movement on the x-axis is correct or an error. In testing, the x-axis will be moved using *software* by 10mm to 100mm.

Table 1. X-Axis Movement Accuracy Error Test Results

No	Long (mm)	Measurement results Axis x (mm)	Error (%)
1	10	10	0
2	20	20	0
3	30	30	0
4	40	40	0
5	50	50	0
6	60	60	0
7	70	70	0
8	80	80	0
9	90	90	0
10	100	99	1
Average error			0.1

- b. Testing the error value for the accuracy of the x-axis movement
This test aims to determine the y-axis error value, whether the movement on the y-axis is correct or an error. In testing, the y-axis will be moved using *software* as far as 10mm to 100mm.

Table 2. Y-Axis Movement Accuracy Error Test Results

No	Long (mm)	Measurement results Axis y(mm)	Error (%)
1	10	10	0
2	20	20	0
3	30	30	0
4	40	40	0
5	50	50	0
6	60	60	0
7	70	70	0
8	80	80	0
9	90	90	0
10	100	99	1
Average error			0.1

- c. Testing the error value for the accuracy of the Z axis movement
This test aims to determine the z-axis error value, whether the movement on the z-axis is correct or an error. In testing the z-axis will be moved using *software* by 1mm to 10 mm .

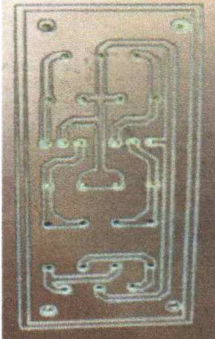
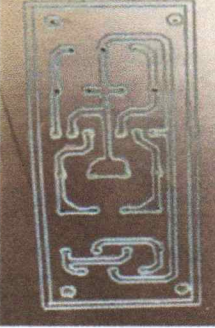
Table 3. Z-Axis Movement Accuracy Error Test Results

No	Long (mm)	Measurement results z-axis (mm)	Errors (%)	Accuracy (%)
1	1	1	0	100
2	2	2	0	100
3	3	3	0	100
4	4	4	0	100
5	5	5	0	100
6	6	6	6	100
7	7	7	7	100
8	8	8	8	100
9	9	9	9	100
10	10	9.9	0.1	99.9
Average error			0.01	99.99

d. PCB paths print testing with FR2 and FR 4

In this test, two different PCBs were used and the same drill bit was intended to determine the difference in results from the two PCBs, namely FR 2 and FR 4.

Table 3. PCB Print Results with FR 2 and FR 4

NO	PCB Type	Print results	Information
1	FR2 is made from paper impregnated with plastic resin Phenolic formaldehyde in terms of flexibility, this type is quite flexible		It can be concluded that the results of using an FR2 type PCB are quite good, but there are a few lines that are not neat because the FR2 material is a little elastic.
2	FR4 is made of woven fiberglass which is then coated with resin in terms of material This type of PCB is quite hard and does not bend easily		It can be concluded that the results of using a PCB with the FR4 type path look neat because the PCB material is not elastic, a hard material

It can be seen that using a PCB with FR2 type looks uneven because the FR2 PCB material is slightly elastic causing the surface to be slightly wavy and for experiments with the 4 lane FR type it looks neat because the PCB material is not *elastic*.

e. Testing PCB print results

At this stage, the results of testing are the results of the layout design that has been made using a PCB layout maker application which will later be printed using a CNC machine that prints PCB lines, whether the printed lines and distances for each component have the same results or not.

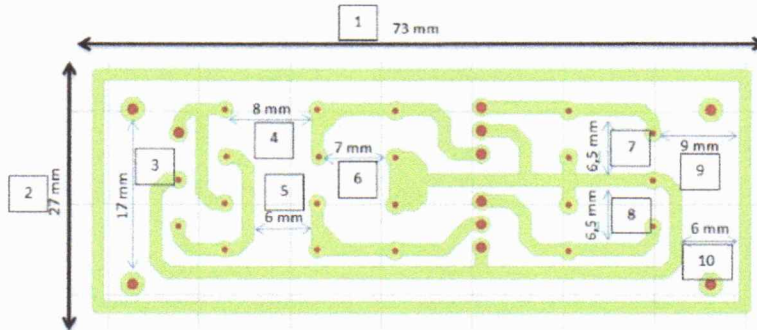


Figure 6. Design Layout

The image is the result of a PCB *layout design* that has been created using a PCB path maker application with specified distance sizes.

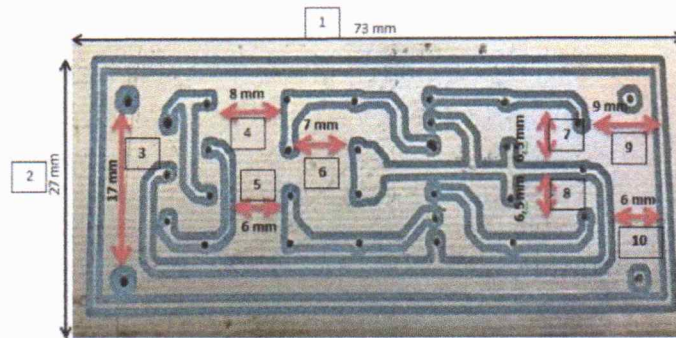


Figure 7. PCB Print Results

In Figure 4.8 is the result of a PCB print using the *layout design* that was created in Figure 4.7. It can be seen that the distance between components has the same similarity as can be seen in Figure 4.8.

4. Discussion

PCB (Printed Circuit Board) is component base from Suite electronics. PCB has function for connect between component electronic One with others. PCB is used for makes the assembly process easier component Because cable liaison component Already changed become track copper. Frequent manual processes very done moment This own enough flow complicated, where at the beginning first thing to do is create a PCB layout with software that can used, next do print PCB path can with use whiteboard marker permanent, ironed or laser printing. This manual thing Still Lots own Lots lack Where sometimes the path printed on the PCB can just disconnect that makes the connecting process track electronic must done return. Many studies have been done do discussion related topic this , has done study for the PCB milling process using a 3 axis robot with configuration movement based on 3 axes base namely X, Y and Z [15] , discussion related convenience For PCB manufacturing is also growing with utilization CNC machining , development with produce mini CNC machine with low cost For making or PCB drawing is expected can increase good flexibility [17] . Study furthermore use of CNC for PCB engraving is also being developed To use efficient and reduced workmanship use material chemistry in the PCB printing process [2] . Utilization Arduino Uno also provides convenience in the manufacturing process engrave PCB directly automatic with utilise CNC machine [9] , deep processing PCB manufacturing is also developed in the drilling process matter this can also be done done development more carry on For complete the internal process PCB manufacturing automatic utilise machine [16] . Utilization of available software convert PCB design with easy will speed up the manufacturing process , with strengthening from side of the hardware used [18] . Utilization of G-Code with using the GRBL controller as controller CNC machine , GRBL controller will works For drives stepper motors and GRBL software, stepper motors, spindles as well as eye drill will move [19] . CNC a lot very possible development done For produce convenience application made PCB path automatic [20] .

5. Conclusions

The conclusions from the research that have been carried out are as follows:

- This PCB line printing CNC machine has a movement accuracy of % error with an error value of % for the X axis of 0.1mm, the Y axis of 0.1 and the Z axis of 0.01 .
- The type of PCB that has good printing results is PCB FR4
- The results of the PCB layout carving using a CNC machine exactly match the design provided.

References

- [1] D. Suwandi and J. BadruzzamanIstiyanto, "Microfabrication of PCB Tracks Using the Visible Light Maskless Photolithography Method," J. Teknol. Apply ., vol. 1, no. 1, pp. 1–10, 2015.
- [2] T. Pramuji, I. Saputro, L. Retno Hidayati, and J. Electrical Engineering Semarang State Polytechnic Jl Sudarto, "CNC (Computer Numerical Control) Design for Making Arduino-Based PCBs," Orbith , vol. 19, no. 1, pp. 43–49, 2023.
- [3] Mukhofidhoh and N. Kholis, "Design and Build of an Automatic Mini PCB Drilling Machine Based on Arduino UNO," J. Tek. Electro , vol. 7, no. 1, pp. 9–16, 2018.
- [4] A. Kumia and LH Pratomo, "PCB Milling Process Using a 3D Printer Based," in Proceedings of the National Electrical Engineering Seminar , 2020, pp. 47–51.

- [5] A. Muchlis, W. Ridwan, and IZ Nasibu, "Design and Construction of Laser CNC (Computer Numerical Control) Machines Using the Design for Assembly Method," *Jambura J. Electr. Electrons. Eng.*, vol. 3, no. 1, pp. 23–27, 2021, doi: 10.37905/jjee.v3i1.9228.
- [6] TU Syamsuri, R. Sucipto, and Epiwardi, "Design and Manufacture of a CNC Laser Engraving Machine Prototype Using a Microcontroller as Wireless Communication," *Elposys J. Sist. Electricity*, vol. 10, no. 1, pp. 60–65, 2023, doi: 10.33795/elposys.v10i1.1008.
- [7] AF Ilman, MU Faruq, and M. Nur, "Design of a 3-axis wood carving CNC machine using a microcontroller," *J. Techno Bahari*, vol. 9, no. 2, pp. 15–20, 2022.
- [8] HAMRADPT Nurohmah, "Optimization of CNC PCB Drilling Machine Control System Programming Based on the Firefly Algorithm Method," *ALINIER J. Artif. Intel. Appl.*, vol. 3, no. 2, pp. 28–37, 2022, doi: 10.36040/alinier.v3i2.5840.
- [9] A. Gumelar and Edidas, "CNC (Computer Numerically Controlled) Microcontroller-based PCB Layout Design," *J. Vocat. Tech. Electron. and Inform.*, vol. 8, no. 3, pp. 34–44, 2020, [Online]. Available: <http://ejournal.unp.ac.id/index.php/voteknika/>
- [10] I. Pranata and S. Nuryadi, "DESIGN AND BUILDING OF AN ARDUINO BASED PCB PRINTING MACHINE USING CNC (Computer Numerical Control) METHOD."
- [11] TF Prasetyo, H. Sujadi, and RM Azizi, "Design and Development of Automatic Engineering Equipment on a Whiteboard Using Arduino Uno R3 Integrated with Android," *Infotech J.*, vol. 6, no. 2, p. 59, 2020.
- [12] NYD Setyaningsih, K. Annudin, and Solekhan, "The influence of ruggedness reviews 3-dimensional photo carving media based on 3-Axis CNC router," *J. Robot. Control*, vol. 2, no. 3, pp. 212–216, 2021, doi: 10.18196/jrc.2381.
- [13] W. Ismaranatasia, B. Setiawan, and S. Subiyantoro, "Stepper Motor Control for X, Y, Z Axis Movement in Bilaterally Symmetrical 3D Printers," *J. Elektron. and Automation Ind.*, vol. 8, no. 2, p. 66, 2021, doi: 10.33795/elk.v8i2.277.
- [14] A. Mashinton et al., "Design and Build a 3 Axis CNC Milling Machine Using an Android Control System," *Maple*, vol. 3, pp. 1–8, 2021.
- [15] Zulkarnain and B. Suprianto, "Design of a PCB Milling Machine with a 3-Axis Cartesian Robot Configuration," *J. Tek. Electro*, vol. 8, no. 3, pp. 587–593, 2019.
- [16] A. Cahyadi, D. Septiyanto, and N. Mulyono, "Design of a PCB drilling computer numerical control machine using Raspberry Pi," *JITEL (Journal of Ilm. Telekomun. Elektron. dan List. Energi)*, vol. 3, no. 2, pp. 111–120, 2023, doi: 10.35313/jitel.v3.i2.2023.111-120.
- [17] I. Malik, S. Effendi, and S. Witjahjo, "Design of a Mini CNC Engraver Machine as a Learning Tool," *J. Tek.*, vol. 69, no. 74, pp. 69–74, 2019.
- [18] D. Kurniawan Pradana, "Design of a home-made CNC milling machine for making PCBs," *Tekno. Electro*, vol. 10, no. 1, 2011.
- [19] M. Jufrizaldy, I. Ilyas, and M. Marzuki, "Design of a CNC Milling Machine Using the Grcbl Control System for Making PCB Layouts," *J. Applied Science Machines.*, vol. 4, no. 1, p. 37, 2020, doi: 10.30811/jmst.v4i1.1743.
- [20] & H. Hasibuan ARM, Muhaimin., "Design of a 3-Axis Cnc Milling Machine for Arduino Uno Based PCB Engraving," *J. Tektro*, vol. 3, no. 1, pp. 40–47, 2019.

CNC Plotter Printed Circuit Board

ORIGINALITY REPORT

5%

SIMILARITY INDEX

3%

INTERNET SOURCES

2%

PUBLICATIONS

2%

STUDENT PAPERS

PRIMARY SOURCES

- 1 Submitted to Wheeler High School**
Student Paper 1%
- 2 e-jurnal.pnl.ac.id**
Internet Source 1%
- 3 eprints.umk.ac.id**
Internet Source 1%
- 4 Saminto, Anang Susanto, Rizky Fajarudin, Anwar Budianto, Adi Abimanyu. "Design of control instrumentation system for setting the stripper position on DECY-13 Cyclotron", Journal of Physics: Conference Series, 2020**
Publication 1%
- 5 Johan Ihsan, Muhamad Safwan Hilmi, Pranesh Krishnan. "Design And Development Of A Modular Computer Numerical Control (CNC) Machine Manipulator For Automation", International Journal of Innovative Technology and Exploring Engineering, 2019**
Publication 1%

Tanggal: 13 MAY 2024

Mengetahui,
Pit. Ka UPT Perpustakaan

Hayu Mariana S, S.E
NIS: 0610702000002194

6

Nafi' Inayati Zahro, Rina Fiati, R. Hadapining Radja Kusumodestoni. "Corporate Entrepreneurship of SMEs and Business Management Strategies in the Digital Era", KnE Social Sciences, 2024

Publication

1 %

Exclude quotes Off

Exclude matches < 1%

Exclude bibliography On